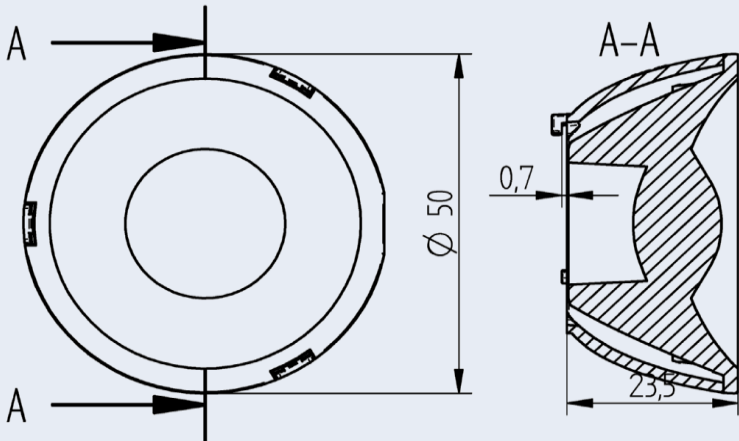


# OptiSpot Lens Ø 50 mm - Spot

35.250 - Optispot Lens for use with COB connectors 47.360 Ø 35 mm

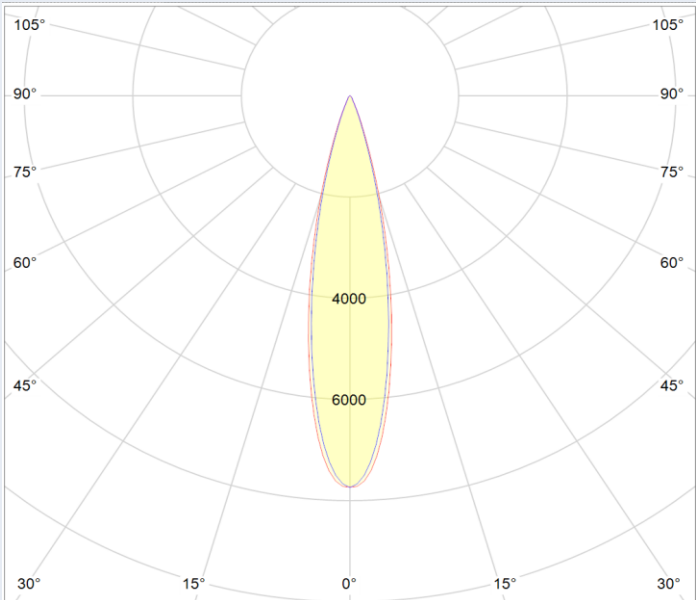


Part no.  
**35.250.2001-0**  
**OptiSpot Lens Ø 50 mm - Spot**  
  
**Bayonet fixing by Twist & Lock action**  
  
**Light distribution: Spot**  
  
OptiSpot Lens is optimized for use with connectors  
**47.360** with Ø 35 mm.\*

Specification	
Top diameter	50 mm
Height	23,50 mm
Material holder	PC
Material lens	PMMA
Operating temperature	- 40°C ... 80°C*
Weights	29,7 g
Light distribution	Spot
Beam angle* (FWHM)	20°
Efficiency**	85,5%
Recommended COB Type	Citizen CLU02J

\*\*Light distributions change with choice of LED type,  
measured with COB Citizen CLU02J and BJB connector 47.360.1020-0

\* 70°C, if ball pressure test according to EN 60598-1 section 13.2.1 is required for components that ensure protection against electric shock



Beam angle (FWHM) measured with Citizen CLU02J  
and connector **47.360.1020-0**  
  
Beam angle (FWHM): 20° Efficiency: 85,5%  
  
Light distribution and beam angle depend on the COB  
used and its LES.