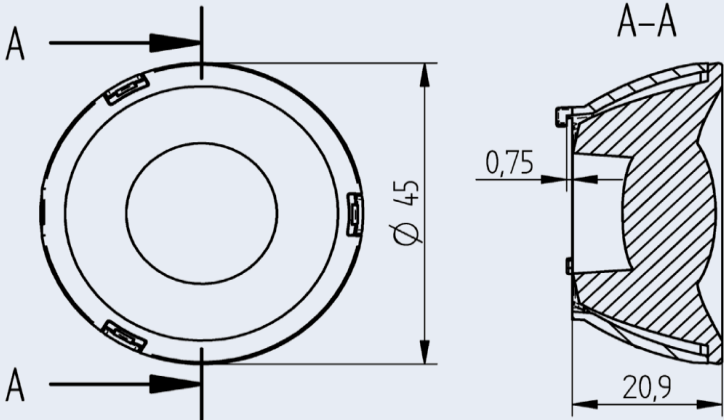


# OptiSpot Lens Ø 45 mm - Flood

35.245 - OptiSpot Lens for use with COB connectors 47.360 Ø 35 mmm

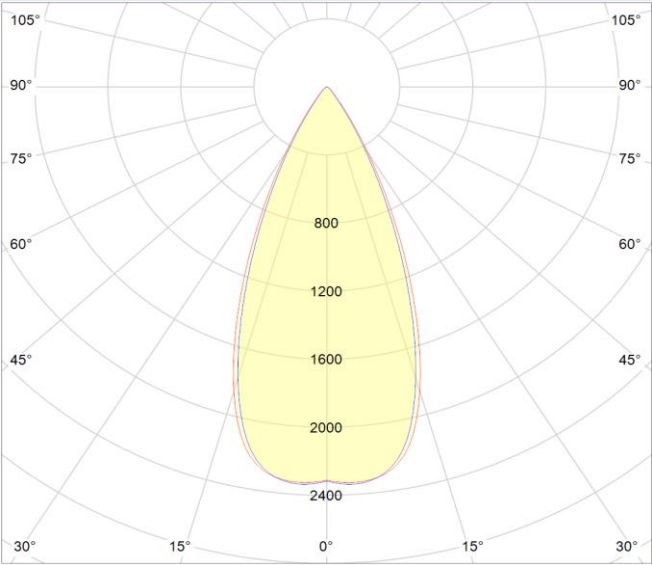


Part no.  
**35.245.2003-0**  
**OptiSpot Lens Ø 45 mm - Flood**  
  
**Bayonet fixing by Twist & Lock action**  
  
**Light distribution: Flood**  
  
OptiSpot Lens is optimized for use with connectors  
**47.360** with Ø 35 mm.\*

Specification	
Ø on top	45 mm
Height	20,90 mm
Material holder	PC
Material lens	PMMA
Operating temperature	- 40°C ... 80°C*
Weights	20,8 g
Light distribution	Flood
Beam angle* (FWHM)	42°
Efficiency**	85%
Recommended COB Type	Citizen CLU02J

\*\*Light distributions change with choice of LED type,  
measured with COB Luminus CHM-6 and BJB connector 47.360.1020-0.

\* 70°C, if ball pressure test according to EN 60598-1 section 13.2.1 is required for components that ensure protection against electric shock



Beam angle (FWHM) measured with Citizen  
CLU02J and connector **47.360.1020-0**.  
  
Beam angle (FWHM): 42° Efficiency: 85%  
  
Beam angle depends on used COB and its LES.